

# Veterinary prosthetics-preparation instructions



**Onlay**  
Proximal Section  
1.5mm min



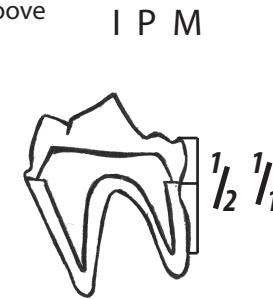
**Halfcrown**  
Including Incisal Edge 2mm min.



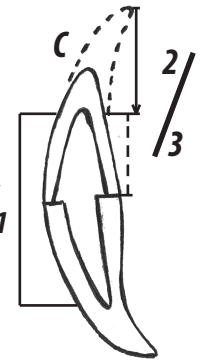
All metal crown preparation: knife edge-chamfer-shoulder-bevelled shoulder  
Total surface reduction minimum 0,75 - 1mm.



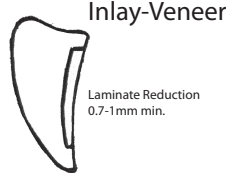
Retentive groove paralel with the axis of replacement mouting



Root inlay



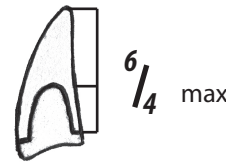
**Inlay**  
No Cavo-Surface Bevels  
2mm min.



**Inlay-Veneer**  
Laminate Reduction  
0.7-1mm min.



All-ceramics/composite crown preparation: chamfer-shoulder surface reduction min. 1.5 - 2mm



Standart porcelain labial margin preparation: 90° Shoulder Reduction

## Places designated for polishing

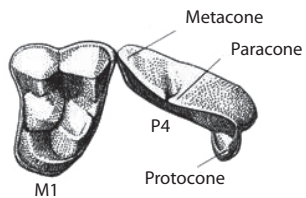


**ATTENTION:** Plaster model marked red in some places indicates undercut areas or little room for a crown. Minimal thickness of metal 0.3 mm should be allowed for. Relying on the fact that the model fits with no polishing will result in tension in the place designated for sharpening and thus deformation of the metal coat of the composite or ceramic layer.

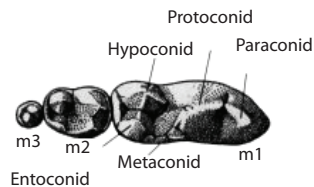


## Beasts of prey ( carnivora )

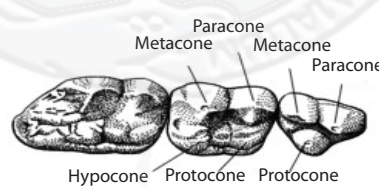
Dental terminology - name definition and main peaks placements



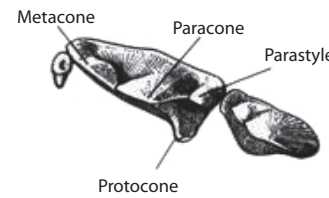
**Canids (canidae)**  
upper right PM4/M1



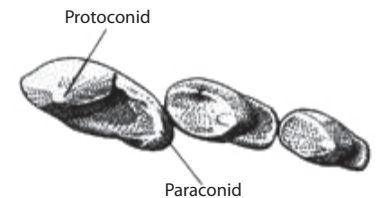
lower left m1/m2/m3



**Ursinae (ursidae)**  
upper right P4/M1/M2



**Felinae (felidae)**  
upper right PM3/PM4/M1



lower left pm3/pm4/m1

Necessary materials: Imprinting of prepared tooth with an imprint of upper and lower jaw by VPS (Vinylpolysiloxan) substance, wax registration of the bite.